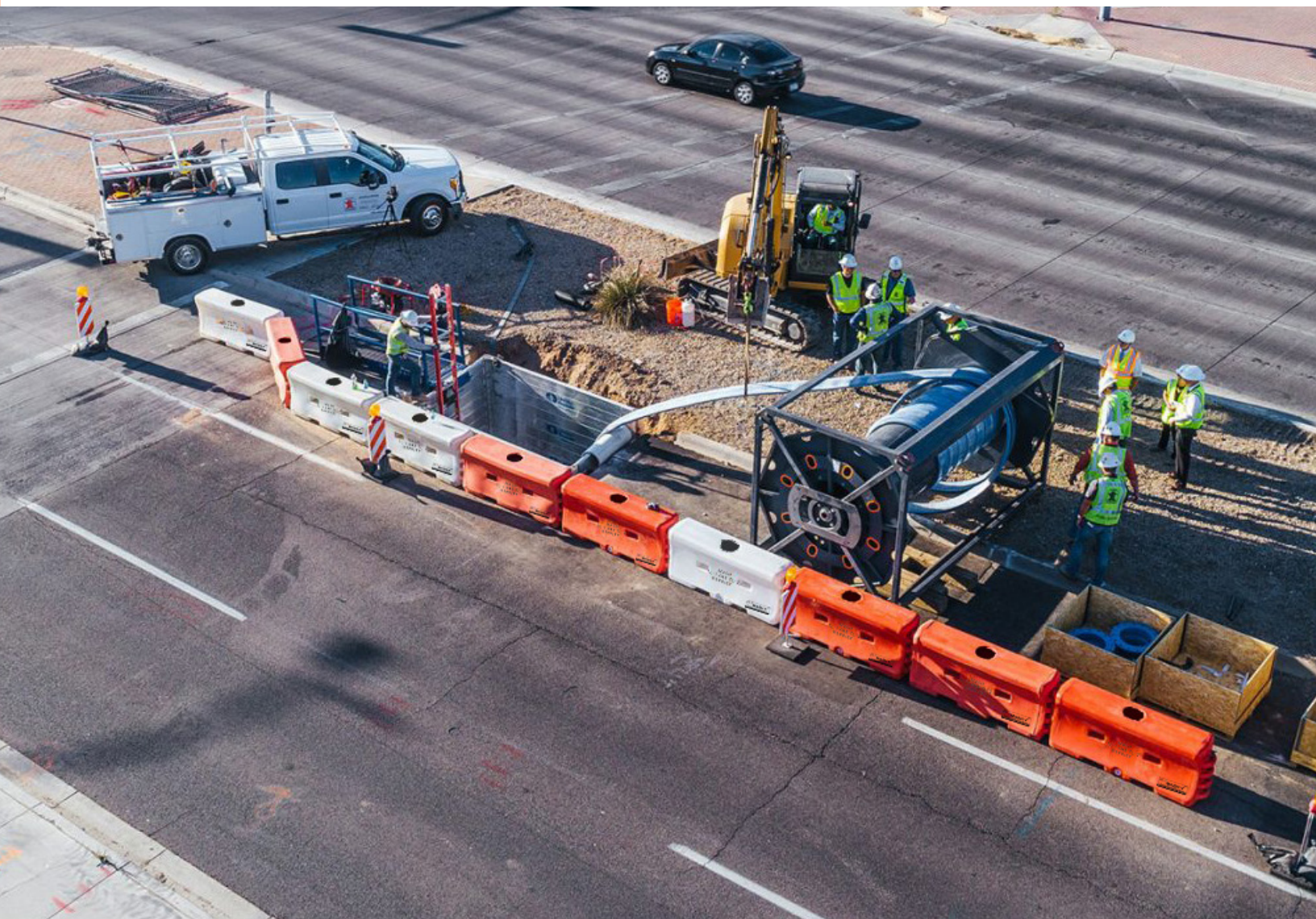


WATER-FILLED BARRIER SYSTEMS

MASH Eligible Barrier Systems for Superior Safety



Water-Wall™
Water-Filled Barrier

**TraFFix
WATER-CABLE
Barrier™**

WWF
Water-Wall Fence™

Sentry™
Water-Cable Barrier



Water-Wall™

Water-Filled Barrier



TL-2 WATER-FILLED CRASH BARRIER



45032-O
Orange Water-Wall



45032-W
White Water-Wall

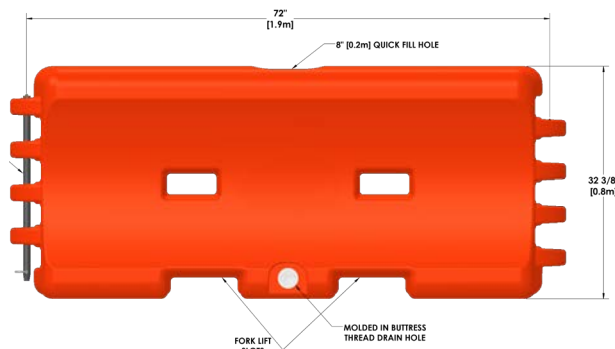
MASH Eligible TL-2 Longitudinal Channelizing Device

- NCHRP-350 Tested and Passed as TL-1 Barrier Wall, TL-2 Longitudinal Channelizing Device, and TL-3 Barricade
- 32" tall x 72" long: Low profile design for optimal driver visibility of incoming traffic at intersections
- Durable, low-density polyethylene plastic minimizes cracking and breaking for long-lasting performance
- Double-wall knuckle design minimizes breakage and creates a strong connection at hinge points
- Hinge design allows up to a 30° pivoting for easy layout and site encirclement with end pin or fence t-pin, plus **NEW** corner piece enables versatile 90° pivoting between barriers
- Large 8" fill hole speeds filling process; includes twist-lock plastic cap
- Tamper-resistant, offset drain plug with coarse buttress thread screws in or out in only 2½ turns
- Includes one steel connection pin and keeper pin per wall to allow sections to be locked together
- Forklift and pallet jack slots are molded in for easy movement
- Standard orange or white walls; additional colors available upon request
- Accepts the Water-Wall chain link fence for additional job site security

WATER-WALL® WATER-FILLED BARRIER SPECIFICATION

Water-Wall to be 72" long x 32" tall x 18" wide and molded from linear low density polyethylene. Water-Wall to be MASH Eligible as a Longitudinal Channelizing Device, TL-2. Individual wall shall weigh 80 lbs. empty and 1,110 lbs. filled. Standard colors are white or orange. Water-Wall sections are connected together with galvanized steel T-pins passing through a double wall knuckle which minimizes breakage at hinge points. Wall shall pivot up to 30 degrees when connected. Water-Wall to have one 8" diameter fill hole for quick fill and a twist lock cap for closure. Water-Wall will have molded through holes to provide easy movement. Drain plug to be offset to protect against cracking or breaking and have coarse buttress threads for quick removal and attachment. Water-Walls shall stack for easy movement and storage.

| | |
|---------------------------------|-----------------------|
| LENGTH: | 72 in. / 1.82 m |
| HEIGHT: | 32 in. / 0.81 m |
| WIDTH: | 18 in. / 0.46 m |
| WEIGHT: <i>Empty</i> | 80 lbs. / 36.30 kg |
| WEIGHT: <i>Filled</i> | 1,110 lbs / 503.50 kg |



00 NEW CORNER PIECE

NEW corner piece enables versatile 90° pivoting between barriers



00 EFFICIENT PLUG + DRAIN

Large 8" fill hole speeds filling process, includes twist-lock plastic cap; new tamper resistant, offset drain plug with coarse buttress thread



00 STACKABLE DESIGN

Stacks neatly for storage & transportation



00 EASY TRANSPORT

Can be easily lifted & placed using a forklift or pallet jack



00 VERSATILE CONFIGURATIONS

30-degree pivoting hinge design allows the Water-Wall to handle curved roads and versatile configurations

MASH Eligible As:

TL-2 Longitudinal Channelizing Device [WZ-358]

NCHRP 350 Approved As:

TL-1 Longitudinal Barrier [HSA-110/B-130]

TL-2 Longitudinal Channelizing Device [HSA-10/WZ-224]

TL-3 Barricade [HSA-10/WZ-224]



TrafFix *WATER-CABLE* Barrier™



TL-2 LONGITUDINAL CRASH BARRIER



45332-MO
Orange Water-Cable Barrier



45332-MW
White Water-Cable Barrier

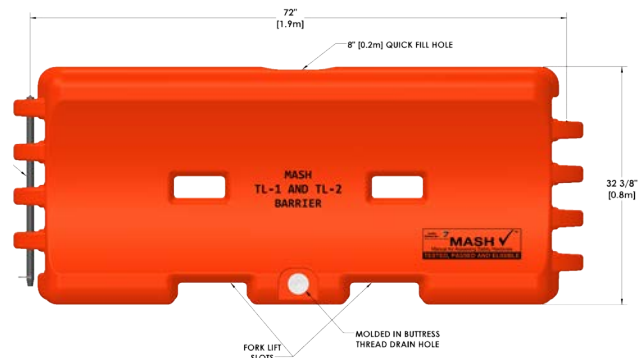
MASH Tested, Passed and Eligible at TL-1 31 mph (50 km/hr) and TL-2 43.5 mph (70 km/hr) levels

- Three molded in galvanized steel cables strengthen water-cable barrier to resist vehicle penetration during an impact
- Double-wall knuckle design minimizes breakage at hinge points
- Durable polyethylene plastic with ultra violet additives resist fading, cracking and breaking
- Hinge design allows for a 30-degree pivot between sections
- Large 8" fill-hole speeds filling process, includes twist-lock plastic cap
- Tamper resistant drain plug with coarse buttress thread eliminates cross threading and quickly screws in or out in only 2½ turns
- Includes one steel connection pin that allows sections to be linked together
- Forklift / pallet jack slots for easy movement and placement
- Standard orange or white walls; additional colors available upon request

TRAFFIX WATER-CABLE BARRIER™ SPECIFICATION

Water-Cable Barrier to be 72" (1.9 m) long x 18" (0.46 m) wide x 32" (0.8 m) tall and molded from polyethylene. Water-Cable Barrier to be MASH tested, passed and eligible for TL-1, 31 mph (50 km/hr) and TL-2, 43.5 mph (70 km/hr) barrier applications. Individual wall (empty) shall weigh 100 lbs (45.4 kg) including internal cables and 1,070 lbs. (485.3 kg) when filled. Three 3/8" diameter stranded steel cables are molded into the wall to contain the impacting vehicle during an accident. Standard colors are orange and white, product may also be produced in other colors. Water-Cable Barrier modules are connected together with galvanized steel T-pins passing through a double wall knuckle which minimizes breakage at hinge points. Water-Cable Barrier shall pivot up to 30 degrees when connected. Water-Cable Barrier to have one 8" (.2 m) diameter fill hole for quick filling and a twist lock cap for closure. Water-Cable Barrier will have molded fork lift slots to provide easy movement. Drain plug to be centered on the modules to protect against cracking or breaking and have coarse buttress threads for quick removal and insertion.

| | |
|---------------------------------|-----------------------|
| LENGTH: | 76 in. / 1.93 m |
| HEIGHT: | 32 in. / 0.82 m |
| WIDTH: | 18 in. / 0.46 m |
| WEIGHT: <i>Empty</i> | 80 lbs. / 36.29 kg |
| WEIGHT: <i>Filled</i> | 1,170 lbs / 530.70 kg |



00 STACKABLE DESIGN

Stacks neatly for storage & transportation



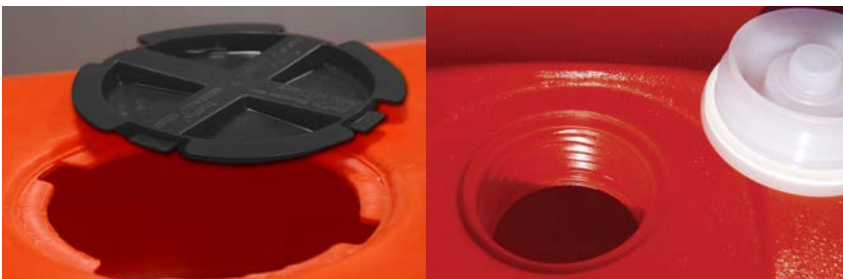
00 EASY TRANSPORT

Can be easily lifted & placed using a forklift or pallet jack



00 NEW CORNER PIECE

NEW corner piece enables versatile 90° pivoting between barriers



00 EFFICIENT PLUG + DRAIN SYSTEM

Large 8' fill hole speeds filing process, includes twist-lock plastic cap; new tamper resistant, offset drain plug with coarse buttress thread

MASH Eligible As:

TL-1 Longitudinal Barrier [B-271]

TL-2 Longitudinal Barrier [B-272]



SentryTM

Water-Cable Barrier



TOUGHEST TEMPORARY AND PORTABLE TL-3 LONGITUDINAL BARRIER SYSTEM



45332-MO

Orange Sentry Water-Cable Barrier



45332-MW

White Sentry Water-Cable Barrier

MASH Eligible as a TL-3 Barrier

- The perfect alternative to heavy concrete barriers
- Ideal for bridge deck work; lighter than concrete median barriers and no anchors needed
- Four each 3/8" diameter stranded steel cabled to prevent vehicle penetration into the work zone
- Stacking lugs for easy storage and transport
- Bushings & cable assemblies are integrally molded into connecting lugs
- Eleven interlocking knuckles on each end
- Easy to transport and easy to install



SENTRY WATER-CABLE BARRIER™ SPECIFICATION

Sentry Water-Cable Barrier to be 75.6" (1.9 m) long x 22.5" (0.57 m) wide x 45.8" (1.2 m) tall and molded from polyethylene. Sentry Water-Cable Barrier to be MASH tested, passed and eligible for TL-3, 62.1 mph (100 km/hr) longitudinal barrier applications. Individual wall (empty) shall weigh 215 lbs (97.5 kg) including internal cables and 2,150 lbs. (975.2 kg) when filled with water. Four 3/8" diameter stranded steel cables are molded into the wall to contain the impacting vehicle during an accident. Standard colors are orange/red and white, product may also be produced in other colors. Sentry Water-Cable Barrier modules are connected together with galvanized steel T-pins passing through a double wall knuckle which minimizes breakage at hinge points. Sentry Water-Cable Barrier shall pivot up to 15 degrees when connected. Sentry Water-Cable Barrier to have one 8" (.2 m) diameter fill hole for quick filling and a twist lock cap for closure. Sentry Water-Cable Barrier will have molded fork lift slots to provide easy movement. Drain plug to be centered on the modules to protect against cracking or breaking and have coarse buttress threads for quick removal and insertion. Sentry Water-Cable Barrier shall stack for easy movement and storage.

LENGTH:

76 in. / 1.93 m

HEIGHT:

43 in. / 1.09 m

WIDTH:

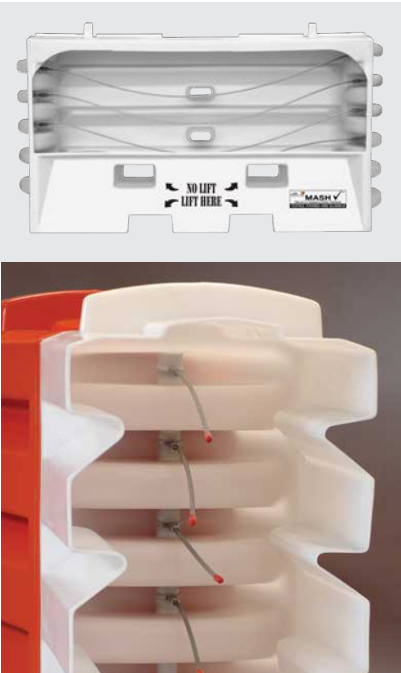
18 in. / 0.46 m

WEIGHT:
Empty

215 lbs. / 97 kg

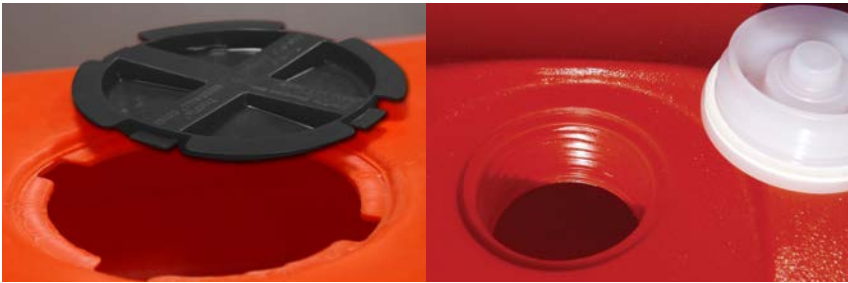
WEIGHT:
Filled

2,150 lbs / 975 kg



00 MOLDED CABLES

Cutaways show four integrally molded cables and bushings to prevent vehicle penetration into the workzone



00 EFFICIENT PLUG + DRAIN SYSTEM

Large 8' fill hole speeds filing process, includes twist-lock plastic cap; new tamper resistant, offset drain plug with coarse buttress thread



00 EASY ROTATION

Pinned walls rotate up to 15 degrees for versatile configurations along roadways



MASH Eligible As:
TL-3 Longitudinal Barrier [B-279]



DURABLE + VERSATILE JOBSITE PROTECTION BARRIER FENCE AND GATE SYSTEM

Only MASH Tested and Eligible Fence Panel

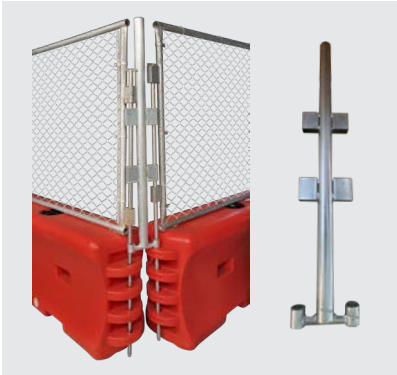
- Keep an area or construction zone secure with the Water-Wall Fence
- Easily retrofits to the existing TrafFix Water-Wall or Water-Cable Barrier™ to create an imposing and secure barrier
- Water-Wall Fence is made of 11-gauge galvanized steel mesh, providing security and visibility
- Fence sections interlink with Water-Wall to provide better overall stability and allows for changes on uneven ground
- Water-Walls pivot up to a 30° rotation for easy layout and encircling of job sites with end pin or fence t-pin, plus **NEW** corner pieces enable 90° linking between barriers
- Additional hole provided at the upper end of T-Pin for security bolt to enhance security
- Fill caps are easily accessible with fence installed; no need to remove fence to fill Water-Wall or Water-Cable Barrier
- 6 ft. Single or 12 ft. Double Gate available to provide a secure entrance for workers or work vehicles

45032-WWF
Water-Wall Fence Panels on
with Orange and White
Water-Wall LCDs



WATER-WALL FENCE™ SPECIFICATION

Chain link fence panel attaches to the top of a Traffix Water-Wall or Traffix Water-Cable Barrier. Each panel is linked to the next panel using extended length steel T-Pins. The fence panel is MASH Tested, Passed and Eligible when used with the Water-Wall LCD or Water-Cable barrier only. Chain link fence is 11 gauge steel, connected to vertical steel posts of 1 5/8" diameter. Fence sections will be 72" wide x 52" tall. Each fence section will weigh no more that 42 lbs including the connector T-Pin. Each T-Pin will extend down through the fence sections into the knuckles of the Water-Wall LCD or Water-Cable Barrier to securely connect the fence to the wall. The fence will accommodate a 6' single gate or a 12' double gate for entrance or exit from the work zone. Overall height of the Water-Wall Fence attached to the top of the Water-Wall LCD or Water-Cable Barrier will be a minimum of 7'.



00 NEW FENCE CORNER PIECE

Water-Wall Fence rotates up to 30° degrees with end pin or fence t-pin, and up to 90° degrees with NEW corner pieces



DESCRIPTION

STOCK

DIMENSIONS

WW Fence Panels

45032-WWF

72" wide x 52" tall

**6 ft. Single Gate
(includes two Gate Attachment Frames)**

45032-WWF-GATE6

72" wide x 72" tall

**12 ft. Dual Gate
(includes two Gate Attachment Frames)**

45032-WWF-GATE12

144" wide x 72" tall

Gate Attachment Frame

45032-WWF-GA

82" x 12"

T-Pin with Keeper Pin

45032-WWF-CP

72" length

Water-Wall Corner Piece

45032-WWF90

8" wide x 30" tall

Water-Wall Fence Corner Piece

45032-WWF90

8" wide x 56" tall

Water-Wall (White)

45032-W

72" length x 32" tall

Water-Wall (Orange)

45032-O

72" length x 32" tall

Water-Cable Barrier (White)

45332-MW

72" length x 32" tall

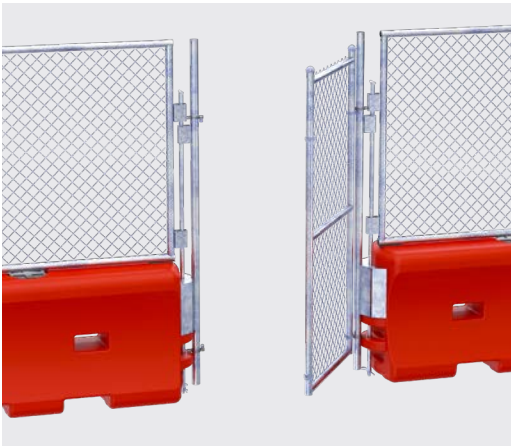
Water-Cable Barrier (Orange)

45332-MO

72" length x 32" tall

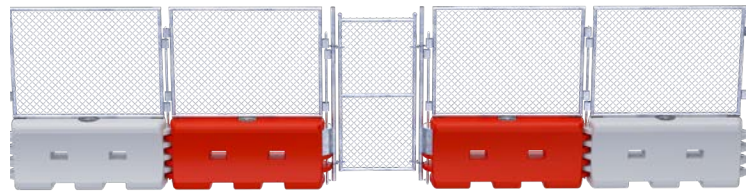


DURABLE + VERSATILE JOBSITE PROTECTION GATE SYSTEM AND EXTRA PARTS



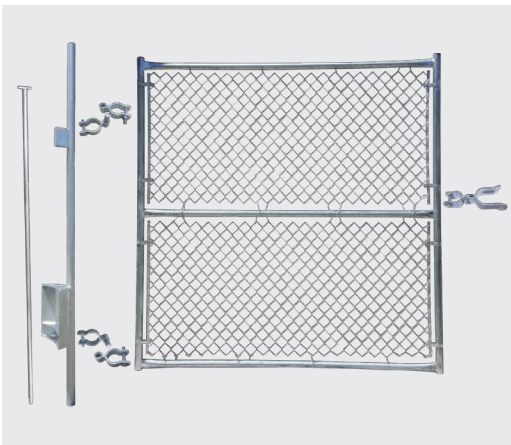
PERSONNEL GATE OPTION

Water-Wall Fence rotates up to 30° degrees with end pin or fence t-pin, and up to 90° degrees with NEW corner pieces



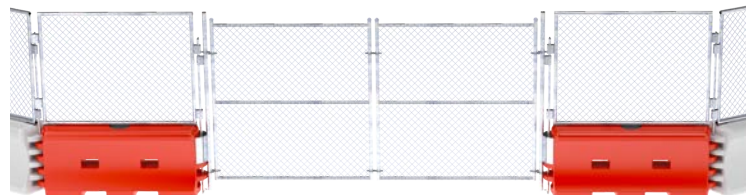
45032-WWF-GF

Water-Wall Fence Personnel Gate with all components



6' SECURITY GATE OPTION

Water-Wall Fence rotates up to 30° degrees with end pin or fence t-pin, and up to 90° degrees with NEW corner pieces



45032-WWF-GF

Water-Wall Fence 6' Gate with all components

WATER-WALL + WATER-CABLE BARRIER HARDWARE



18009-BLK
No Fill Cap



45033-RC-B
Plastic Drain Plug



45032-PN
Keeper Pin



45032-WW90
90° Corner Pin



18009-B-I
Drive-by Float Lid



45032-DPT
Drain Plug Socket Tool



45032-CPGAL
T-Pin



45032-PDW
Plastic Drain
Plug Wrench

WATER-WALL FENCE HARDWARE



18009-BLK
No Fill Cap



45033-RC-B
Plastic Drain Plug



45032-PN
Keeper Pin



45032-WWF90
90° Water-Wall
Fence Corner Pin



18009-B-I
Drive-by Float Lid



45032-DPT
Drain Plug Socket Tool



45032-WWF-CPGAL
T-Pin



45032-PDW
Plastic Drain
Plug Wrench

45032-WWF-GF
Gate Fork



45032-WWF-GHF
Gate Hinge Female



45032-WWF-GHM
Gate Hinge Female



SENTRY WATER-CABLE BARRIER HARDWARE



18009-BLK
No Fill Cap



45033-RC-B
Plastic Drain Plug



45032-PN
Keeper Pin



45032-PDW
Plastic Drain
Plug Wrench



18009-B-I
Drive-by Float Lid



45032-DPT
Drain Plug Socket Tool



45032-WWF-CPGAL
T-Pin



Distributed by:
Croc Crash Solutions
772-220-3434
wearecroc.com