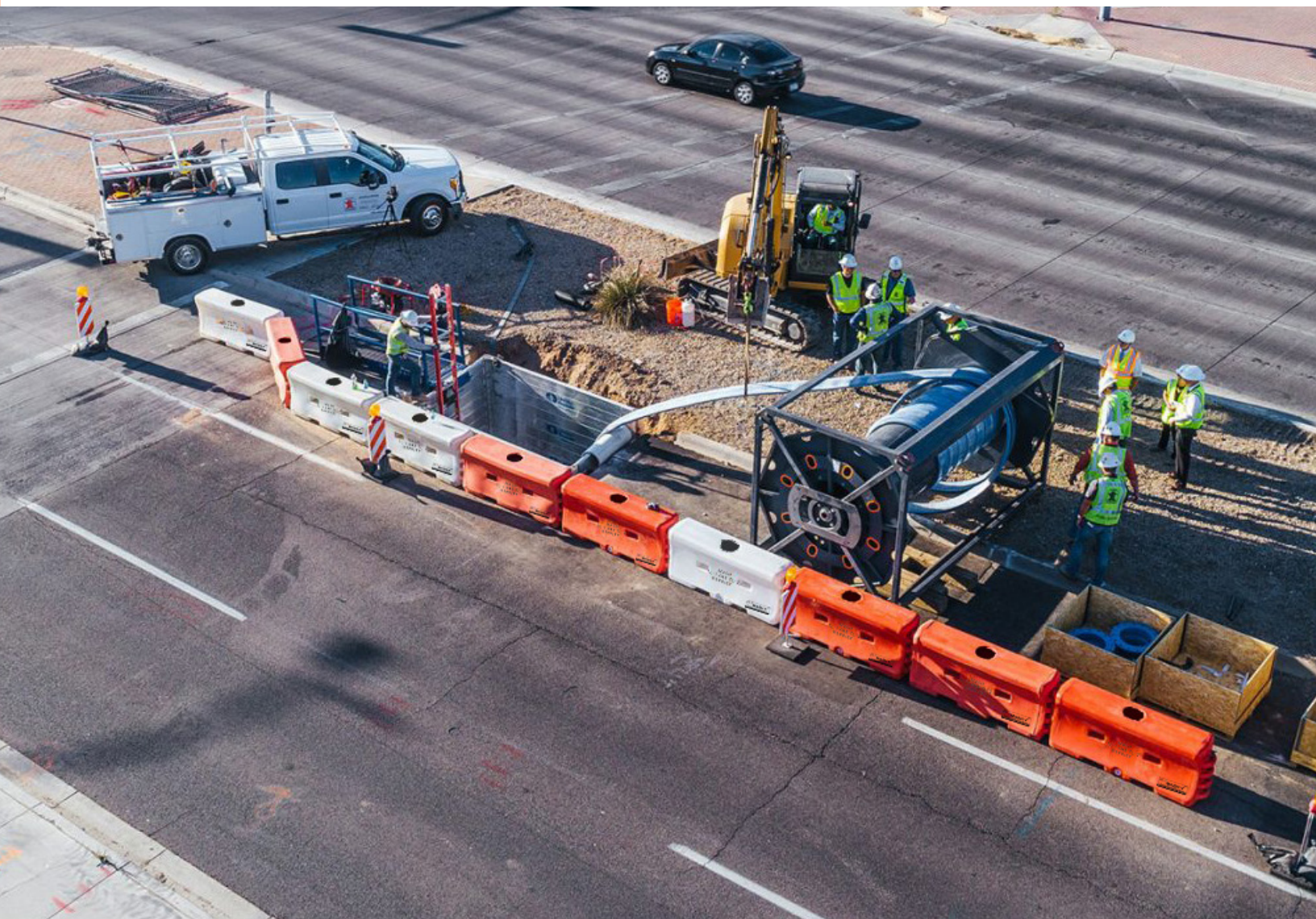


# WATER-FILLED BARRIER SYSTEMS

MASH Eligible Barrier Systems for Superior Safety

---



**Water-Wall™**  
Water-Filled Barrier

**TraFFix  
WATER-CABLE  
Barrier™**

**WWF**  
Water-Wall Fence™

**Sentry™**  
Water-Cable Barrier





# Water-Wall™

## Water-Filled Barrier



## TL-2 WATER-FILLED CRASH BARRIER



**45032-O**  
Orange Water-Wall



**45032-W**  
White Water-Wall

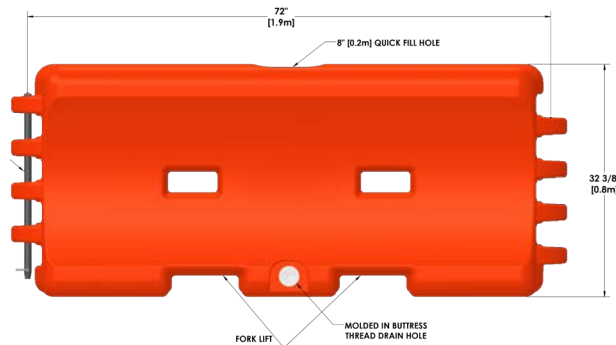
### MASH Eligible TL-2 Longitudinal Channelizing Device

- NCHRP-350 Tested and Passed as TL-1 Barrier Wall, TL-2 Longitudinal Channelizing Device, and TL-3 Barricade
- 32" tall x 72" long: Low profile design for optimal driver visibility of incoming traffic at intersections
- Durable, low-density polyethylene plastic minimizes cracking and breaking for long-lasting performance
- Double-wall knuckle design minimizes breakage and creates a strong connection at hinge points
- Hinge design allows up to a 30° pivoting for easy layout and site encirclement with end pin or fence t-pin, plus **NEW** corner piece enables versatile 90° pivoting between barriers
- Large 8" fill hole speeds filling process; includes twist-lock plastic cap
- Tamper-resistant, offset drain plug with coarse buttress thread screws in or out in only 2½ turns
- Includes one steel connection pin and keeper pin per wall to allow sections to be locked together
- Forklift and pallet jack slots are molded in for easy movement
- Standard orange or white walls; additional colors available upon request
- Accepts the Water-Wall chain link fence for additional job site security

# WATER-WALL® WATER-FILLED BARRIER SPECIFICATION

Water-Wall to be 72" long x 32" tall x 18" wide and molded from linear low density polyethylene. Water-Wall to be MASH Eligible as a Longitudinal Channelizing Device, TL-2. Individual wall shall weigh 80 lbs. empty and 1,110 lbs. filled. Standard colors are white or orange. Water-Wall sections are connected together with galvanized steel T-pins passing through a double wall knuckle which minimizes breakage at hinge points. Wall shall pivot up to 30 degrees when connected. Water-Wall to have one 8" diameter fill hole for quick fill and a twist lock cap for closure. Water-Wall will have molded through holes to provide easy movement. Drain plug to be offset to protect against cracking or breaking and have coarse buttress threads for quick removal and attachment. Water-Walls shall stack for easy movement and storage.

<b>LENGTH:</b>	72 in. / 1.82 m
<b>HEIGHT:</b>	32 in. / 0.81 m
<b>WIDTH:</b>	18 in. / 0.46 m
<b>WEIGHT:</b> <i>Empty</i>	80 lbs. / 36.30 kg
<b>WEIGHT:</b> <i>Filled</i>	1,110 lbs / 503.50 kg



## 00 NEW CORNER PIECE

NEW corner piece enables versatile 90° pivoting between barriers



## 00 EFFICIENT PLUG + DRAIN

Large 8" fill hole speeds filling process, includes twist-lock plastic cap; new tamper resistant, offset drain plug with coarse buttress thread



## 00 STACKABLE DESIGN

Stacks neatly for storage & transportation



## 00 EASY TRANSPORT

Can be easily lifted & placed using a forklift or pallet jack



## 00 VERSATILE CONFIGURATIONS

30-degree pivoting hinge design allows the Water-Wall to handle curved roads and versatile configurations

### MASH Eligible As:

TL-2 Longitudinal Channelizing Device [WZ-358]

### NCHRP 350 Approved As:

TL-1 Longitudinal Barrier [HSA-110/B-130]

TL-2 Longitudinal Channelizing Device [HSA-10/WZ-224]

TL-3 Barricade [HSA-10/WZ-224]





# TrafFix *WATER-CABLE* Barrier™



## TL-2 LONGITUDINAL CRASH BARRIER



**45332-MO**  
Orange Water-Cable Barrier



**45332-MW**  
White Water-Cable Barrier

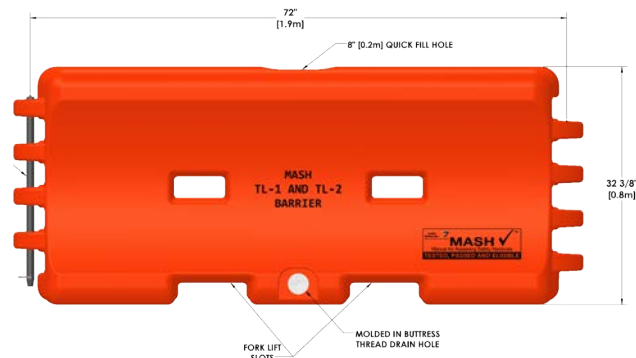
**MASH Tested, Passed and Eligible at TL-1 31 mph (50 km/hr) and TL-2 43.5 mph (70 km/hr) levels**

- Three molded in galvanized steel cables strengthen water-cable barrier to resist vehicle penetration during an impact
- Double-wall knuckle design minimizes breakage at hinge points
- Durable polyethylene plastic with ultra violet additives resist fading, cracking and breaking
- Hinge design allows for a 30-degree pivot between sections
- Large 8" fill-hole speeds filling process, includes twist-lock plastic cap
- Tamper resistant drain plug with coarse buttress thread eliminates cross threading and quickly screws in or out in only 2½ turns
- Includes one steel connection pin that allows sections to be linked together
- Forklift / pallet jack slots for easy movement and placement
- Standard orange or white walls; additional colors available upon request

# TRAFFIX WATER-CABLE BARRIER™ SPECIFICATION

Water-Cable Barrier to be 72" (1.9 m) long x 18" (0.46 m) wide x 32" (0.8 m) tall and molded from polyethylene. Water-Cable Barrier to be MASH tested, passed and eligible for TL-1, 31 mph (50 km/hr) and TL-2, 43.5 mph (70 km/hr) barrier applications. Individual wall (empty) shall weigh 100 lbs (45.4 kg) including internal cables and 1,070 lbs. (485.3 kg) when filled. Three 3/8" diameter stranded steel cables are molded into the wall to contain the impacting vehicle during an accident. Standard colors are orange and white, product may also be produced in other colors. Water-Cable Barrier modules are connected together with galvanized steel T-pins passing through a double wall knuckle which minimizes breakage at hinge points. Water-Cable Barrier shall pivot up to 30 degrees when connected. Water-Cable Barrier to have one 8" (.2 m) diameter fill hole for quick filling and a twist lock cap for closure. Water-Cable Barrier will have molded fork lift slots to provide easy movement. Drain plug to be centered on the modules to protect against cracking or breaking and have coarse buttress threads for quick removal and insertion.

<b>LENGTH:</b>	76 in. / 1.93 m
<b>HEIGHT:</b>	32 in. / 0.82 m
<b>WIDTH:</b>	18 in. / 0.46 m
<b>WEIGHT:</b> <i>Empty</i>	80 lbs. / 36.29 kg
<b>WEIGHT:</b> <i>Filled</i>	1,170 lbs / 530.70 kg



## 00 STACKABLE DESIGN

Stacks neatly for storage & transportation



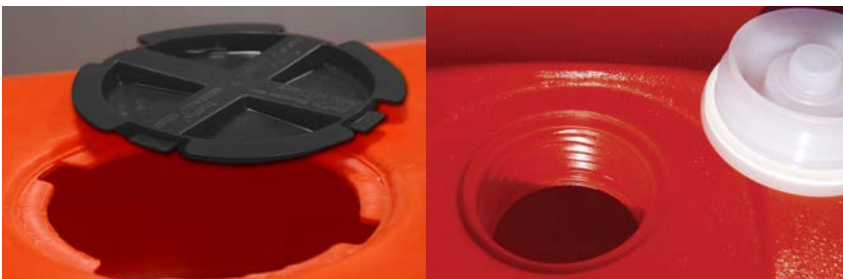
## 00 EASY TRANSPORT

Can be easily lifted & placed using a forklift or pallet jack



## 00 NEW CORNER PIECE

NEW corner piece enables versatile 90° pivoting between barriers



## 00 EFFICIENT PLUG + DRAIN SYSTEM

Large 8' fill hole speeds filing process, includes twist-lock plastic cap; new tamper resistant, offset drain plug with coarse buttress thread

### MASH Eligible As:

TL-1 Longitudinal Barrier [B-271]

TL-2 Longitudinal Barrier [B-272]





# Sentry<sup>TM</sup>

## Water-Cable Barrier



## TOUGHEST TEMPORARY AND PORTABLE TL-3 LONGITUDINAL BARRIER SYSTEM



**45332-MO**

Orange Sentry Water-Cable Barrier



**45332-MW**

White Sentry Water-Cable Barrier

### MASH Eligible as a TL-3 Barrier

- The perfect alternative to heavy concrete barriers
- Ideal for bridge deck work; lighter than concrete median barriers and no anchors needed
- Four each 3/8" diameter stranded steel cabled to prevent vehicle penetration into the work zone
- Stacking lugs for easy storage and transport
- Bushings & cable assemblies are integrally molded into connecting lugs
- Eleven interlocking knuckles on each end
- Easy to transport and easy to install



# SENTRY WATER-CABLE BARRIER™ SPECIFICATION

Sentry Water-Cable Barrier to be 75.6" (1.9 m) long x 22.5" (0.57 m) wide x 45.8" (1.2 m) tall and molded from polyethylene. Sentry Water-Cable Barrier to be MASH tested, passed and eligible for TL-3, 62.1 mph (100 km/hr) longitudinal barrier applications. Individual wall (empty) shall weigh 215 lbs (97.5 kg) including internal cables and 2,150 lbs. (975.2 kg) when filled with water. Four 3/8" diameter stranded steel cables are molded into the wall to contain the impacting vehicle during an accident. Standard colors are orange/red and white, product may also be produced in other colors. Sentry Water-Cable Barrier modules are connected together with galvanized steel T-pins passing through a double wall knuckle which minimizes breakage at hinge points. Sentry Water-Cable Barrier shall pivot up to 15 degrees when connected. Sentry Water-Cable Barrier to have one 8" (.2 m) diameter fill hole for quick filling and a twist lock cap for closure. Sentry Water-Cable Barrier will have molded fork lift slots to provide easy movement. Drain plug to be centered on the modules to protect against cracking or breaking and have coarse buttress threads for quick removal and insertion. Sentry Water-Cable Barrier shall stack for easy movement and storage.

**LENGTH:**

76 in. / 1.93 m

**HEIGHT:**

43 in. / 1.09 m

**WIDTH:**

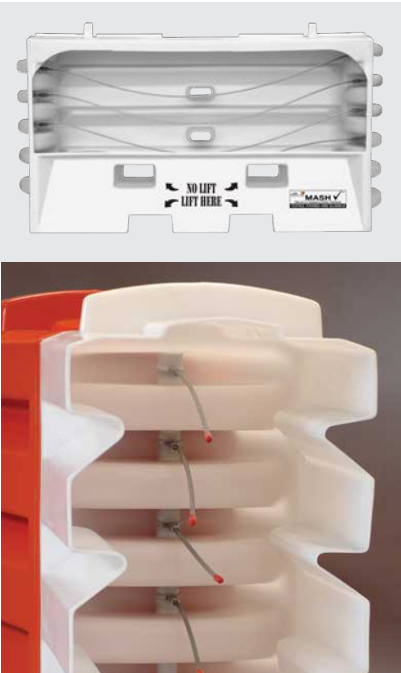
18 in. / 0.46 m

**WEIGHT:**  
Empty

215 lbs. / 97 kg

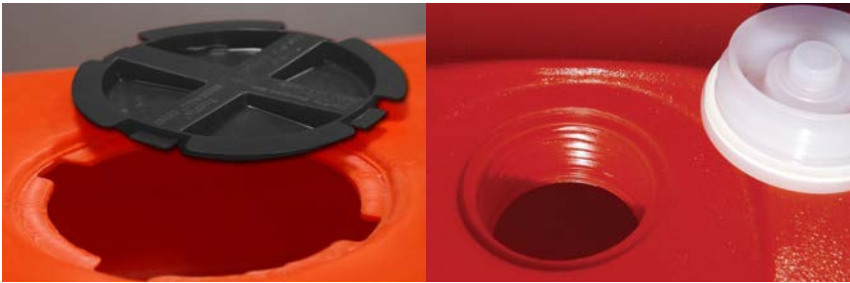
**WEIGHT:**  
Filled

2,150 lbs / 975 kg



## 00 MOLDED CABLES

Cutaways show four integrally molded cables and bushings to prevent vehicle penetration into the workzone



## 00 EFFICIENT PLUG + DRAIN SYSTEM

Large 8' fill hole speeds filing process, includes twist-lock plastic cap; new tamper resistant, offset drain plug with coarse buttress thread



## 00 EASY ROTATION

Pinned walls rotate up to 15 degrees for versatile configurations along roadways



**MASH Eligible As:**  
TL-3 Longitudinal Barrier [B-279]





## DURABLE + VERSATILE JOBSITE PROTECTION BARRIER FENCE AND GATE SYSTEM

### Only MASH Tested and Eligible Fence Panel

- Keep an area or construction zone secure with the Water-Wall Fence
- Easily retrofits to the existing TrafFix Water-Wall or Water-Cable Barrier™ to create an imposing and secure barrier
- Water-Wall Fence is made of 11-gauge galvanized steel mesh, providing security and visibility
- Fence sections interlink with Water-Wall to provide better overall stability and allows for changes on uneven ground
- Water-Walls pivot up to a 30° rotation for easy layout and encircling of job sites with end pin or fence t-pin, plus **NEW** corner pieces enable 90° linking between barriers
- Additional hole provided at the upper end of T-Pin for security bolt to enhance security
- Fill caps are easily accessible with fence installed; no need to remove fence to fill Water-Wall or Water-Cable Barrier
- 6 ft. Single or 12 ft. Double Gate available to provide a secure entrance for workers or work vehicles

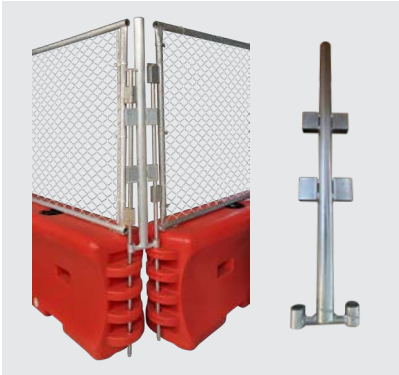
**45032-WWF**  
Water-Wall Fence Panels on  
with Orange and White  
Water-Wall LCDs





# WATER-WALL FENCE™ SPECIFICATION

Chain link fence panel attaches to the top of a Traffix Water-Wall or Traffix Water-Cable Barrier. Each panel is linked to the next panel using extended length steel T-Pins. The fence panel is MASH Tested, Passed and Eligible when used with the Water-Wall LCD or Water-Cable barrier only. Chain link fence is 11 gauge steel, connected to vertical steel posts of 1 5/8" diameter. Fence sections will be 72" wide x 52" tall. Each fence section will weigh no more that 42 lbs including the connector T-Pin. Each T-Pin will extend down through the fence sections into the knuckles of the Water-Wall LCD or Water-Cable Barrier to securely connect the fence to the wall. The fence will accommodate a 6' single gate or a 12' double gate for entrance or exit from the work zone. Overall height of the Water-Wall Fence attached to the top of the Water-Wall LCD or Water-Cable Barrier will be a minimum of 7'.



## 00 NEW FENCE CORNER PIECE

Water-Wall Fence rotates up to 30° degrees with end pin or fence t-pin, and up to 90° degrees with NEW corner pieces



### DESCRIPTION

### STOCK #

### DIMENSIONS

**WW Fence Panels**

45032-WWF

72" wide x 52" tall

**6 ft. Single Gate  
(includes two Gate Attachment Frames)**

45032-WWF-GATE6

72" wide x 72" tall

**12 ft. Dual Gate  
(includes two Gate Attachment Frames)**

45032-WWF-GATE12

144" wide x 72" tall

**Gate Attachment Frame**

45032-WWF-GA

82" x 12"

**T-Pin with Keeper Pin**

45032-WWF-CP

72" length

**Water-Wall Corner Piece**

45032-WWF90

8" wide x 30" tall

**Water-Wall Fence Corner Piece**

45032-WWF90

8" wide x 56" tall

**Water-Wall (White)**

45032-W

72" length x 32" tall

**Water-Wall (Orange)**

45032-O

72" length x 32" tall

**Water-Cable Barrier (White)**

45332-MW

72" length x 32" tall

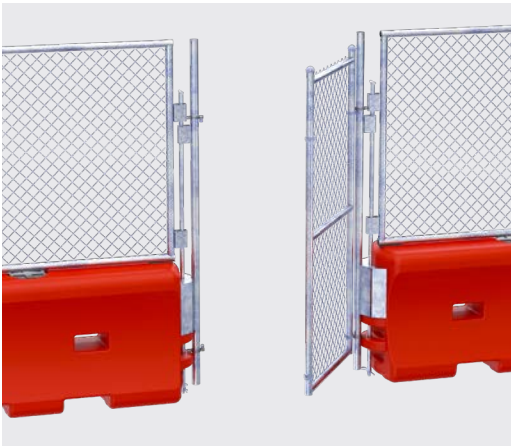
**Water-Cable Barrier (Orange)**

45332-MO

72" length x 32" tall

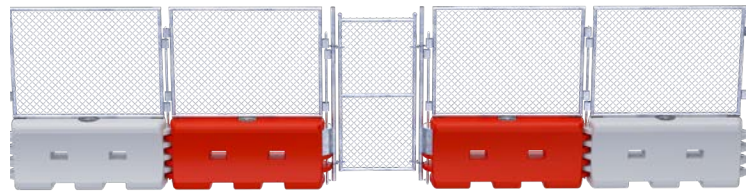


## DURABLE + VERSATILE JOBSITE PROTECTION GATE SYSTEM AND EXTRA PARTS



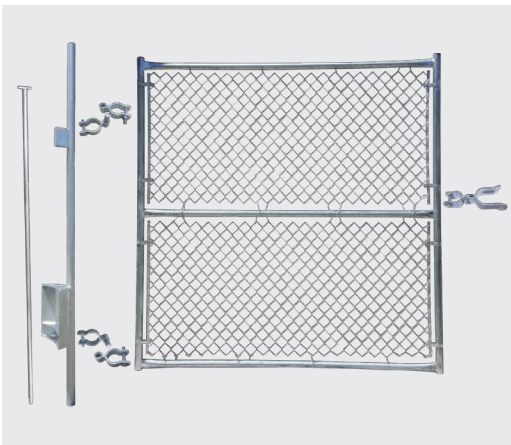
### PERSONNEL GATE OPTION

Water-Wall Fence rotates up to 30° degrees with end pin or fence t-pin, and up to 90° degrees with NEW corner pieces



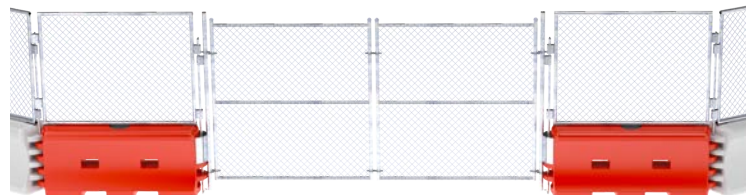
#### 45032-WWF-GF

Water-Wall Fence Personnel Gate with all components



### 6' SECURITY GATE OPTION

Water-Wall Fence rotates up to 30° degrees with end pin or fence t-pin, and up to 90° degrees with NEW corner pieces



#### 45032-WWF-GF

Water-Wall Fence 6' Gate with all components



## WATER-WALL + WATER-CABLE BARRIER HARDWARE



**18009-BLK**  
No Fill Cap



**45033-RC-B**  
Plastic Drain Plug



**45032-PN**  
Keeper Pin



**45032-WW90**  
90° Corner Pin



**18009-B-I**  
Drive-by Float Lid



**45032-DPT**  
Drain Plug Socket Tool



**45032-CPGAL**  
T-Pin



**45032-PDW**  
Plastic Drain  
Plug Wrench

## WATER-WALL FENCE HARDWARE



**18009-BLK**  
No Fill Cap



**45033-RC-B**  
Plastic Drain Plug



**45032-PN**  
Keeper Pin



**45032-WWF90**  
90° Water-Wall  
Fence Corner Pin



**18009-B-I**  
Drive-by Float Lid



**45032-DPT**  
Drain Plug Socket Tool



**45032-WWF-CPGAL**  
T-Pin



**45032-PDW**  
Plastic Drain  
Plug Wrench

**45032-WWF-GF**  
Gate Fork



**45032-WWF-GHF**  
Gate Hinge Female



**45032-WWF-GHM**  
Gate Hinge Female



## SENTRY WATER-CABLE BARRIER HARDWARE



**18009-BLK**  
No Fill Cap



**45033-RC-B**  
Plastic Drain Plug



**45032-PN**  
Keeper Pin



**45032-PDW**  
Plastic Drain  
Plug Wrench



**18009-B-I**  
Drive-by Float Lid



**45032-DPT**  
Drain Plug Socket Tool



**45032-WWF-CPGAL**  
T-Pin



160 Avenida La Pata  
San Clemente, CA 92673  
(949) 361-5663  
[www.traffixdevices.com](http://www.traffixdevices.com)