

**TraFFix  
Devices Inc.**



Engineered Products for Safer Highways

**DELTA**<sup>®</sup>  
- INTELLIGENT CRASH CUSHION -

## DELTA<sup>®</sup> Intelligent Crash Cushion

Redirective Non-Gating Crash Cushion

*MASH Tested, Passed and Eligible TL-3*



Co-Developed with:



### Significantly Simple



- No Hydraulic Cylinders
- No Cartridges
- No Modules
- No Cables
- No Pulleys
- No Tension Bars

### Easiest Installation Process



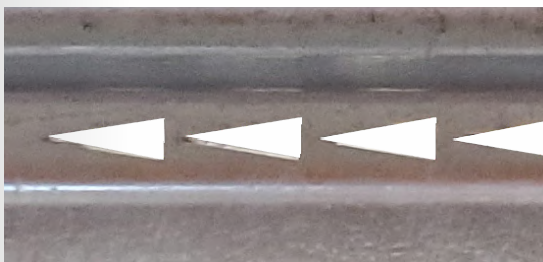
Works as its own template. Set in place, drill and install **39 anchor bolts**.



Comes almost completely pre-assembled. After anchor bolts are installed, attach the nose module with **4 bolts**.

### Attenuating Energy, Simply

Attenuates energy with shear bolts tearing through cut-outs of various sizes & shapes.



Pre-Impact Panel



Post-Impact Panel

[www.traffixdevices.com](http://www.traffixdevices.com)

PRODUCT BULLETIN

## First Ever “Connected Crash Cushion”

The Sentinel® Impact Tracker now comes as standard equipment on every DELTA Intelligent Crash Cushion.



Connect



Monitor



Impact



Alert

## Weights & Measures

<b>Weight:</b>	2,210 lbs. / 1,002 kg
<b>Length:</b>	21 ft. / 6.4 m
<b>Width:</b>	30 in. / 762 mm
<b>Height:</b>	32 in. / 813 mm

## Uncompromised Testing Integrity

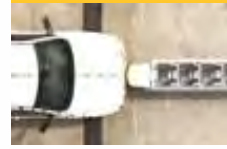
All tests performed at a third party ISO Certified Facility.

3-30



Small Car,  
0° Angle, 1/4 Offset

3-31



Heavy Truck,  
0° Angle, Centered

3-32



Small Car,  
15° Angle, Centered

3-33



Heavy Truck,  
15° Angle, Centered

3-34



Small Car,  
15° Angle, CIP 1 FT.  
Downstream from  
Upstream End

3-35



Heavy Truck,  
25° Angle, CIP 1 FT.  
Downstream from  
Upstream End

3-36



Heavy Truck,  
25° Angle, CIP 7 FT.  
Downstream from  
Upstream End

3-37A



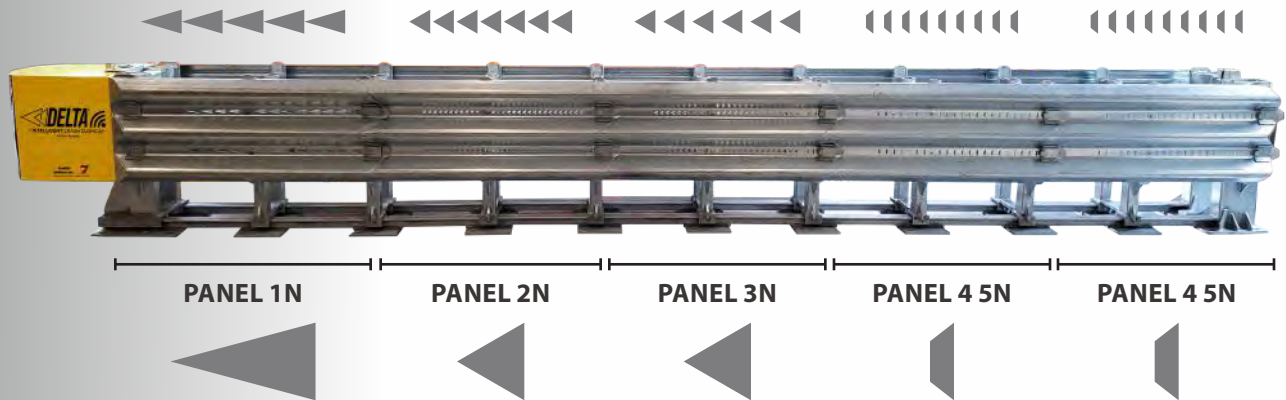
Heavy Truck,  
25° Angle,  
Reverse CIP 4.3 FT.  
Downstream from  
Upstream End

3-38



Mid-size Car,  
0° Angle, Centered

## Significantly Simple and Safe



**TraFFix  
Devices Inc.**

Engineered Products for Safer Highways



**CROC**  
CRASH SOLUTIONS

Distributed by:  
Croc Crash Solutions  
772-220-3434  
wearecroc.com